

Brady BMP[™]71 Label Printer

The Ultimate Datacomms ID Solution

As a datacomms professional, your first priority is keeping the network up and running. The ability to map a cables path across connected components reduces the time taken for your crew to troubleshoot and locate networking problems. Therefore, effective and reliable cable identification is critical to your business.

The Brady BMP[™]71 portable printer is packed with features to make cable identification simple, efficient and reliable.

Compatible with over 400 different Brady label materials, you can custom print all of your wire & cable, asset & component identification and safety & facility quickly, simply and professionally with one mobile printer. Quick and simple to apply, clear print permanence, extreme environment durability and a range of colours – Brady labels allow you to easily meet ANSI/TIA/EIA-606-A labelling standards. Brady has a **specific range of cable ID solutions for all elements of the network infrastructure**. The BMP[™]71 is the ideal on the go solution for datacomms professionals.

With a **large, full colour graphical display**, the BMP[™]71 printer shows you exactly what your label will look like as you're creating it — so there's no guesswork. You can **automatically serialise** on screen and can also print two copies of each serialised label - one for each end of the run.

The BMP[™]71 has a **long battery life** and the battery charges whilst being used on AC power making it ideal for electrical and datacomms professionals.

Brady's a with the printer allowing you to import spreadsheet data, setup barcodes and design your labels at your PC screen with ease.

Brady's **LabelMark[™] software is included** with the printer allowing you to import spreadsheet data, setup barcodes and design your labels at your PC screen with ease.



**CONTACT YOUR LOCAL
PACIFIC DATACOM
BRANCH FOR A QUOTE
AND DEMONSTRATION**

New South Wales

11 Rachael Close, Silverwater NSW 2128
Tel: 02 9647 2271 Fax: 02 9647 2819

Queensland

Unit 2-3, 37 Commercial Road, Fortitude Valley QLD 4006
Tel: 07 3252 7774 Fax: 07 3252 7793

ACT

Unit 2, 86 Townsville Street, Fyshwick ACT 2609
Tel: 02 6280 7155 Fax: 02 6280 7167

Victoria

182 Munro St, South Melbourne VIC 3205
Tel: 03 8671 3222 Fax 03 8671 3299

South Australia

3 Deacon Avenue, Richmond SA 5033
Tel: 08 8443 6288 Fax: 08 8443 6822

Western Australia

103-107 Edward Street, East Perth WA 6004
Tel: 08 9227 5444 Fax 08 9227 5999

Printer Specifications

Recommended label production per day	1,000
Print speed	38.1mm per second
Max. Label width	50.8mm
Continuous Labels	Yes
Die cut labels	Yes
Print colour	Single colour printing
Font sizes	4 to 174 pt
Memory	100,000 characters
PC Connectivity	USB Able to be used with LabelMark™ software
Stand-alone design	Yes
Print resolution	300dpi
Serialisation function	Yes
Barcode function	Yes - 39 and 128
Symbols	500+ built into printer for standalone use, thousands when used with PC Software
Power Supply	Rechargeable Battery and AC Power included



Compatible with TLS 2200™ and HANDIMARK™ Labels

The BMP™71 printer replaces Brady TLS 2200™ and HandiMark™ printers by combining the functionality of both into one printer.

If you currently have a TLS 2200™ or HandiMark™ printer, you can use all your existing label stock with the BMP™71 printer (not including ribbons).

This is in addition to a whole range of labels specifically designed for the BMP™71.

Please note, BMP™71 labels cannot be used in the TLS 2200™ or HandiMark™.

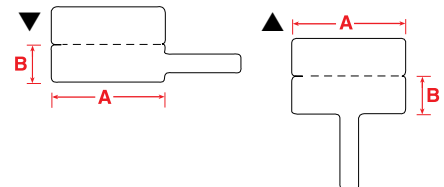
Part No.	Description
115158	BMP™71 Printer* with LabelMark™ Software
872044	BMP™71 Printer* with MarkWare™ Software
114881	Hardcase
114882	Softcase
871843	AC Adaptor
871844	Quick Charger
114885	Battery
114886	Cleaning Kit
114887	TLS 2200™ / HandiMark™ Media Adaptor
103788	USB Cable

*Label printer ships with Hardcase, Charger/AC Adaptor, 1 x Roll of M71-31-423 White Die Cut Labels, 1 x R6000 Ribbon Cartridge, Roll Adaptor, USB Cable, Quickstart Guide, a CD including the Printer Driver, User Guide and Tutorial.

FIBRE OPTIC LABELS - BMP™71



Fibre Optic Labels (B-425) Flag



Part No	Diagram	Reference	Labels Per Roll	Label Dimensions		Applications	Max. Characters Per Line For Font			Max. Lines For Font			Recommended Ribbon Series
				A (mm)	B (mm)		2	7	10	2	7	10	
114705	▼	M71FP-1-425	250	30.00	10.00	Pig-tail & single fibre ID	26	12	8	3	2	1	R-4300
114706	▲	M71FT-1-425	250	30.00	10.00	Pig-tail & single fibre ID	26	12	8	3	2	1	R-4300

New South Wales

11 Rachael Close, Silverwater NSW 2128
Tel: 02 9647 2271 Fax: 02 9647 2819

Queensland

Unit 2-3, 37 Commercial Road, Fortitude Valley QLD 4006
Tel: 07 3252 7774 Fax: 07 3252 7793

ACT

Unit 2, 86 Townsville Street, Fyshwick ACT 2609
Tel: 02 6280 7155 Fax: 02 6280 7167

Victoria

182 Munro St, South Melbourne VIC 3205
Tel: 03 8671 3222 Fax 03 8671 3299

South Australia

3 Deacon Avenue, Richmond SA 5033
Tel: 08 8443 6288 Fax: 08 8443 6822

Western Australia

103-107 Edward Street, East Perth WA 6004
Tel: 08 9227 5444 Fax 08 9227 5999

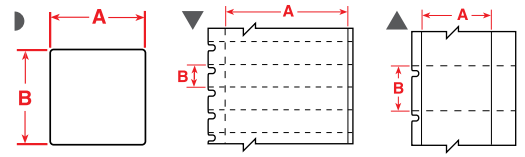
WORKSTATION LABELS - BMP™71

Polypropylene (B-412)
Permanent Glossy Polyester (B-422)
Clear Polyester (B-430)



* This is a TLS2200™ printer label. In order to use these labels with the BMP™71 Printer, please use the yellow adaptor supplied with your printer.

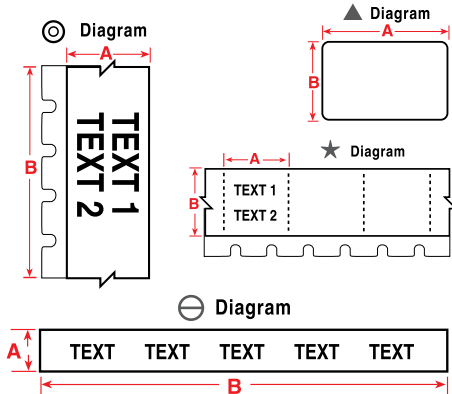
Please note some of the automatic material recognition functionality on the BMP™71 will not be available when using these TLS2200™ parts.



Part No.	Diagram	Reference	Labels Per Roll	Label Dimensions		Applications	Max Characters Per Line for Font:			Maximum Lines Of Text for Font:			Recommended Ribbon Series
				A (mm)	B (mm)		2	7	10	2	7	10	
18674	▲	PTL-39-422*	750	9.52	15.24	1-2 Outlet Faceplates	8	3	2	6	3	2	R-6000
18675	▲	PTL-39-430*	750	9.52	15.24	1-6 Outlet Faceplates	8	3	2	6	3	2	R-6000
18668	▶	PTL-7-422*	500	12.70	12.70	1-6 Outlet Faceplates	11	5	3	5	2	1	R-6000
18453	▶	PTL-7-430*	500	12.70	12.70	1-6 Outlet Faceplates	11	5	3	5	2	1	R-6000
18664	▶	PTL-44-422*	500	12.70	9.53	1-6 Outlet Faceplates	11	5	3	3	1	1	R-6000
18665	▶	PTL-44-430*	500	12.70	9.53	1-6 Outlet Faceplates	11	5	3	3	1	1	R-6000
18672	▶	PTL-16-422*	500	25.40	9.53	1-4 Outlet Faceplates	24	10	7	3	1	1	R-6000
114739	▶	M71-16-430	500	25.40	9.53	1-4 Outlet Faceplates	24	10	7	3	1	1	R-6000
18669	▶	PTL-17-422*	500	25.40	12.70	1-4 Outlet Faceplates	24	10	7	5	2	1	R-6000
114747	▶	M71-17-430	500	25.40	12.70	1-4 Outlet Faceplates	24	10	7	5	2	1	R-6000
18413	▶	PTL-29-422*	500	38.10	12.70	1-2 Outlet Faceplates	37	15	10	5	2	1	R-6000
18671	▶	PTL-29-430*	500	38.10	12.70	1-2 Outlet Faceplates	37	15	10	5	2	1	R-6000
114833	▶	M71-45-422	500	38.10	9.53	1-2 Outlet Faceplates	37	15	10	3	1	1	R-6000
114834	▶	M71-45-430	500	38.10	9.53	1-2 Outlet Faceplates	37	15	10	3	1	1	R-6000
217001	▼	PTL-48-412*	500	40.00	9.00	Insert for BTR faceplate	38	15	10	2	1	1	R-6000
114830	▼	M71-40-412	750	49.23	9.53	Faceplates with DESI-STRIP	40	17	11	3	1	1	R-6000
114868	▼	BM71-40-412	5,000	49.23	9.53	Faceplates with DESI-STRIP	40	17	11	3	1	1	R-6000

PATCH PANEL LABELS - BMP™71

Permanent Glossy Polyester (B-422)
Clear Polyester (B-430)
Aggressive Clear Polyester (B-432)



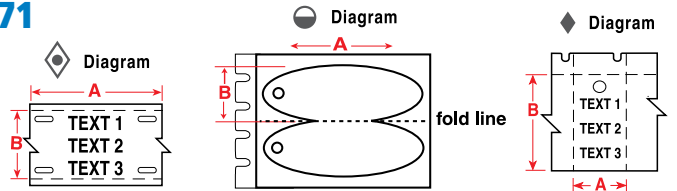
* This is a TLS2200™ printer label. In order to use these labels with the BMP™71 Printer, please use the yellow adaptor supplied with your printer. Please note some of the automatic material recognition functionality on the BMP™71 will not be available when using these TLS2200™ parts.

Part No.	Diagram	Reference	Labels Per Roll	Dimensions		Colour
				A (mm)	B (mm)	
PATCH PANEL – 4 AND 6 PORT						
18674	★	PTL-39-422*	750	15.24	9.53	White
18675	★	PTL-39-430*	750	15.24	9.53	Clear
PATCH PANEL – IDPORT						
18665	▲	PTL-44-430*	500	12.70	9.53	Clear
18664	▲	PTL-44-422*	500	12.70	9.53	White
18453	▲	PTL-7-430*	500	12.70	12.70	Clear
18668	▲	PTL-7-422*	500	12.70	12.70	White
11239	▲	PTL-11-432*	500	19.05	12.70	Clear
114726	▲	M71-10-423	750	19.05	6.35	White
11238	▲	PTL-10-432*	750	19.05	6.35	Clear
CONTINUOUS TAPES						
11244	◎	PTL-101-432*		6.35	15.24m	Clear
11245	◎	PTL-101-483*		6.35	15.24m	White
11246	◎	PTL-101-489*		6.35	15.24m	White
115138	◎	M71C-375-422		9.53	15.24m	White
115135	◎	M71C-375-430		9.53	15.24m	Clear
BROADCAST PATCH BAY STRIPS						
114954	⊖	M71C-230-412		5.84	15.24m	White
115124	⊖	M71C-375-412		9.53	15.24m	White
104280	⊖	M71C-500-412		12.70	15.24m	White
18743	⊖	PTL-58-412*		13.59	15.24m	White
115125	⊖	M71C-785-412		19.94	15.24m	White

POWER AND GROUND CABLE LABELS - BMP™71



Polyethylene Tag (B-109)
2-sided Polyethylene Tag (B-145)



Part No.	Diagram	Reference	Labels Per Roll	Dimensions		Colour	Application
				A (mm)	B (mm)		
114821		M71-36-109	250	28.57	44.45	White	Wire & Cable Marking, Panel identification, Voice/Data identification
114938		M71-111-145-GY	100	30.63	19.25	Grey	Wire & Cable Marking, Panel identification, Voice/Data identification
115002		BM71-111-145-GY	1,000	30.63	19.25	Grey	Wire & Cable Marking, Panel identification, Voice/Data identification
114936		M71-110-145-GY	100	44.45	25.40	Grey	Wire & Cable Marking, Panel identification, Voice/Data identification
115001		BM71-110-145-GY	1,000	44.45	25.40	Grey	Wire & Cable Marking, Panel identification, Voice/Data identification
114731		M71-12-109	100	76.20	19.05	White	Wire & Cable Marking, Panel identification, Voice/Data identification
114867		BM71-12-109	1,000	76.20	19.05	White	Wire & Cable Marking, Panel identification, Voice/Data identification

New South Wales

11 Rachael Close, Silverwater NSW 2128
Tel: 02 9647 2271 Fax: 02 9647 2819

Queensland

Unit 2-3, 37 Commercial Road, Fortitude Valley QLD 4006
Tel: 07 3252 7774 Fax: 07 3252 7793

ACT

Unit 2, 86 Townsville Street, Fyshwick ACT 2609
Tel: 02 6280 7155 Fax: 02 6280 7167

Victoria

182 Munro St, South Melbourne VIC 3205
Tel: 03 8671 3222 Fax: 03 8671 3299

South Australia

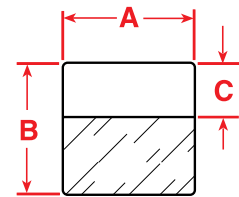
3 Deacon Avenue, Richmond SA 5033
Tel: 08 8443 6288 Fax: 08 8443 6822

Western Australia

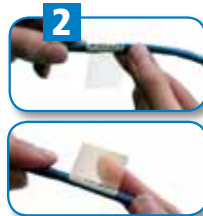
103-107 Edward Street, East Perth WA 6004
Tel: 08 9227 5444 Fax: 08 9227 5999

Self-Laminating Labels - BMP™71

Self-Laminating Vinyl (B-427)



1 Apply the printed area to your wire



2 Wrap the clear area around the wire, covering the printed area



3 Once applied the clear laminate will protect your legend for years to come

Part No.	Reference	Labels Per Roll	Label Dimensions			Write-On C(mm)	Max Char Per Line for Font:			Max Lines Of Text for Font:			Recommended Ribbon Series	Applications
			A(mm)	B(mm)	C(mm)		2	7	10	2	7	10		
MAXIMUM WIRE / CABLE DIAMETER 4.10MM														
114932	M71-10-427*	750	6.35	19.05	9.53	5	2	1	3	1	1	R-4300		
115103	M71-11-427*	500	12.7	19.05	9.53	11	5	3	3	1	1	R-4300		
114871	BM71-11-427	5,000	12.7	19.05	9.53	11	5	3	3	1	1	R-4300		
115000	M71-96-427	250	25.4	19.05	9.53	24	10	7	3	1	1	R-4300		
MAXIMUM WIRE / CABLE DIAMETER 5.30MM														
115094	M71-17-427*	500	12.7	25.4	9.53	11	5	3	3	1	1	R-4300		
115031	BM71-17-427	5,000	12.7	25.4	9.53	11	5	2	3	1	1	R-4300		
115098	M71-18-427*	250	19.05	25.4	9.53	18	7	5	3	1	1	R-4300		
114872	BM71-18-427	2,500	19.05	25.4	9.53	18	7	5	3	1	1	R-4300		
115102	M71-19-427**	250	25.4	25.4	9.53	24	10	7	3	1	1	R-4300	2 pair Fibre, Coax, Single/Multi-Mode	
115108	BM71-19-427	2,500	25.4	25.4	9.53	24	10	7	3	1	1	R-4300	2 pair Fibre, Coax, Single/Multi-Mode	
114759	M71-19-642	250	25.4	25.4	9.53	24	10	7	3	1	1	R-4300	2 pair Fibre, Coax, Plenum grade	
114933	M71-104-427	250	38.1	25.4	9.53	37	15	10	3	1	1	R-4300	2 pair Fibre, Coax, Single/Multi-Mode	
MAXIMUM WIRE / CABLE DIAMETER 6.64MM														
114960	M71-28-427**	750	6.35	38.1	12.7	5	2	1	5	2	1	R-4300		
114794	M71-29-427**	500	12.7	38.1	12.7	11	5	3	5	2	1	R-4300	CAT-5, 4 pair UTP Copper	
115032	BM71-29-427	5,000	12.7	38.1	12.7	11	5	3	5	2	1	R-4300	CAT-5, 4 pair UTP Copper	
114804	M71-30-427**	250	19.05	38.1	12.7	18	7	5	5	2	1	R-4300	CAT-5, 4 pair UTP Copper	
114875	BM71-30-427*	2,500	19.05	38.1	12.7	18	7	5	5	2	1	R-4300	CAT-5, 4 pair UTP Copper	
115100	M71-31-427**	250	25.4	38.1	12.7	24	10	7	5	2	1	R-4300	CAT-5, 4 pair UTP Copper	
114876	BM71-31-427	2,500	25.4	38.1	12.7	24	10	7	5	2	1	R-4300	CAT-5, 4 pair UTP Copper	
114815	M71-31-642	250	25.4	38.1	12.7	24	10	7	5	2	1	R-4300	CAT-5, Plenum grade	
114931	M71-103-427	250	25.4	31.75	12.7	24	10	7	5	2	1	R-4300	CAT-5, 4 pair UTP Copper, Fibre, Coax	
115093	M71-32-427**	250	38.1	38.1	12.7	37	15	10	5	2	1	R-4300	CAT-5, 4 pair UTP Copper, Fibre, Coax	
114877	BM71-32-427*	1,000	38.1	38.1	12.7	37	15	10	5	2	1	R-4300	CAT-5, 4 pair UTP Copper, Fibre, Coax	
114994	M71-88-427	250	44.45	38.1	12.7	40	16	11	5	2	1	R-4300	Fibre, Coax	
114934	M71-107-427	100	50.8	38.1	12.7	46	19	13	5	2	1	R-4300	CAT-5, 4 pair UTP Copper, Fibre, Coax	
115029	BM71-107-427	1,000	50.8	38.1	12.7	46	19	13	5	2	1	R-4300	CAT-5, 4 pair UTP Copper, Fibre, Coax	
MAXIMUM WIRE / CABLE DIAMETER 11.06MM														
115101	M71-21-427**	100	25.4	63.5	19.05	24	10	7	8	4	2	R-4300	25 pair Copper, 4-12 pair Fibre/Coax	
114873	BM71-21-427	1,000	25.4	63.5	19.05	24	10	7	8	4	2	R-4300	25 pair Copper, 4-12 pair Fibre/Coax	
114781	M71-21-642	100	25.4	63.5	19.05	24	10	7	8	4	2	R-4300	25 pair Copper, Plenum grade	
MAXIMUM WIRE / CABLE DIAMETER 14.94MM														
115099	M71-64-427***	50	25.4	85.73	28.58	24	10	7	12	12	8	R-4300	CAT-5, 4 pair UTP Copper, Fibre, Coax	
114990	M71-66-427	100	49.23	80	25.4	0	0	0	0	0	0	R-4300	Backbone	
MAXIMUM WIRE / CABLE DIAMETER 17.71MM														
115089	M71-23-427**	100	25.4	101.6	25.4	24	10	7	10	5	3	R-4300	50 pair Copper, 24 pair Fibre, Backbone	
114874	BM71-23-427	1,000	25.4	101.6	25.4	24	10	7	10	5	3	R-4300	50 pair Copper, 24 pair Fibre, Backbone	
115095	M71-33-427**	100	38.1	101.6	25.4	37	15	10	10	5	3	R-4300	50 pair Copper, 24 pair Fibre, Backbone	
114878	BM71-33-427	500	38.1	101.6	25.4	37	15	10	10	5	3	R-4300	50 pair Copper, 24 pair Fibre, Backbone	
MAXIMUM WIRE / CABLE DIAMETER 26.56MM														
114820	M71-34-427**	50	38.1	152.4	38.1	37	15	10	3	1	1	R-4300	100 pair Copper, 36 pair Fibre, Backbone	
114879	BM71-34-427	500	38.1	152.4	38.1	37	15	10	3	1	1	R-4300	100 pair Copper, 36 pair Fibre, Backbone	

Tedlar © is a registered trademark of DuPont.

* Also available in YL = Yellow

** Also available in BL = Blue, BR = Brown, GR = Green, GY = Grey,

OR = Orange, PL = Purple, RD = Red, YL = Yellow

To order a colour, add a dash "-" after the reference, then add the colour suffix.

*** M71-64-427 has two write-on areas, one at each end of the label

BL	Blue, for horizontal cable terminations
BR	Brown, for campus backbone cable terminations
GR	Green, network connections
GY	Grey, for backbone cable between intermediate cross-connect and telecommunications closet
OR	Orange, central office termination
PL	Purple, major switching and data equipment terminations
RD	Red, for all key telephone equipment terminations
YL	Yellow, for auxiliary, maintenance, alarms, security, etc.

New South Wales

11 Rachael Close, Silverwater NSW 2128
Tel: 02 9647 2271 Fax: 02 9647 2819

Queensland

Unit 2-3, 37 Commercial Road, Fortitude Valley QLD 4006
Tel: 07 3252 7774 Fax: 07 3252 7793

ACT

Unit 2, 86 Townsville Street, Fyshwick ACT 2609
Tel: 02 6280 7155 Fax: 02 6280 7167

Victoria

182 Munro St, South Melbourne VIC 3205
Tel: 03 8671 3222 Fax: 03 8671 3299

South Australia

3 Deacon Avenue, Richmond SA 5033
Tel: 08 8443 6288 Fax: 08 8443 6822

Western Australia

103-107 Edward Street, East Perth WA 6004
Tel: 08 9227 5444 Fax: 08 9227 5999



THE ANS/TIA/EIA 606-A STANDARD

The standard specifies administration for a generic telecommunications cabling system that will support a multi-product, multi-vendor environment. It provides a uniform administration approach that is independent of applications, which may change several times throughout the life of the telecommunications infrastructure. It establishes guidelines for owners, end users, manufacturers, consultants, contractors, designers, installers and facilities administrators involved in the administration of the telecommunications infrastructure.

Use of this Standard is intended to increase the value of the system owner's investment in the infrastructure by reducing the labor expense of maintaining the system, extending the useful economic life of the system and providing effective service to users.

CLASSES OF ADMINISTRATION

There are four classes of administration that all cabling systems fall within:

Class 1 is for systems within a single building having only one Telecommunications Room (TR) that all workstation cabling runs to. The TR, Horizontal Links (HL's) and Telecommunications Main Grounding Busbar (TMGB) are required to be labeled and administered. If the system owner wishes to document pathways or fire stopping locations, Class 2 administration should be used.

Class 2 is for systems within a single building that are served by multiple TR's. Class 2 includes administration for backbone cabling, multi-element grounding and bonding, fire stopping as well as all the items within Class 1.

Class 3 is for systems spanning multiple buildings, known as a campus environment. Class 3 includes administration for buildings and inter-building cabling as well as all elements of Class 2. Administration of Pathways, Spaces and Outside Plant elements is recommended.

Class 4 is for systems spanning multiple campuses, known as multi-site system. Class 4 included administration for each site as well as all elements of Class 3. Administration of Pathways, Spaces and Wide area network connections is recommended.

IDENTIFIERS

A unique identifier is associated with each element of the infrastructure to be identified and serves as the key to finding the recorded information within the administration system selected.

Identifier	Description of Identifier	Class of Administration			
		1	2	3	4
fs	Telecommunication space (TS)	R	R	R	R
fs-an	Horizontal link	R	R	R	R
fs-TMGB	Telecommunications main grounding busbar	R ¹	R ¹	R ¹	R ¹
fs-TGB	Telecommunications grounding zbar	R ¹	R ¹	R ¹	R ¹
fs1/fs2-n	Intrabuilding backbone cable	R	R	R	R
fs1/fs2-n.d	Intrabuilding backbone pair or optical fiber	R	R	R	R
f-FSLn(h)	Firestop location	R	R	R	R
[b1-fs1]/[b2-fs2]-n	Interbuilding backbone cable			R	R

Identifier	Description of Identifier	Class of Administration			
		1	2	3	4
[b1-fs1]/[b2-fs2]-n.d	dinterbuilding backbone pair or optical fiber			R	R
b	building			R	R
c	campus or site			R	R
fs-UUU.n.d(q)	intrabuilding backbone pathway element	0	0	0	0
fs1/fs2-UUU.n.d(q)	intrabuilding backbone pathway between two TSs or areas	0	0	0	0
[b1-fs1]/[b2-fs2]-UUU.n.d(q)	interbuilding pathway or element			0	0

LABELING VISIBILITY AND DURABILITY

The size, color and contrast of all labels should be selected to ensure that the identifiers are easily read. Labels should be visible during the installation of and normal maintenance of the infrastructure. Labels should be resistant to the environmental conditions at the point of installation (such as moisture, heat or ultraviolet light) and should have a design life equal to or greater than that of the labeled component.

Mechanical Generation

To maximize legibility, all labels shall be printed or generated by a mechanical device and shall not be written by hand.

For further information on our full range of Do-It-Yourself wire and cable ID solutions:

visit: www.pacificdatacom.com.au/promotions

Call: 1300 301 006

Email: generalenquiries@pacificdatacom.com.au

New South Wales

11 Rachael Close, Silverwater NSW 2128
Tel: 02 9647 2271 Fax: 02 9647 2819

Queensland

Unit 2-3, 37 Commercial Road, Fortitude Valley QLD 4006
Tel: 07 3252 7774 Fax: 07 3252 7793

ACT

Unit 2, 86 Townsville Street, Fyshwick ACT 2609
Tel: 02 6280 7155 Fax: 02 6280 7167

Victoria

182 Munro St, South Melbourne VIC 3205
Tel: 03 8671 3222 Fax 03 8671 3299

South Australia

3 Deacon Avenue, Richmond SA 5033
Tel: 08 8443 6288 Fax: 08 8443 6822

Western Australia

103-107 Edward Street, East Perth WA 6004
Tel: 08 9227 5444 Fax 08 9227 5999